



Enclose • Protect • Secure

# Wheelchair Accessible Mount

## Improving Accessibility to Payment Terminals

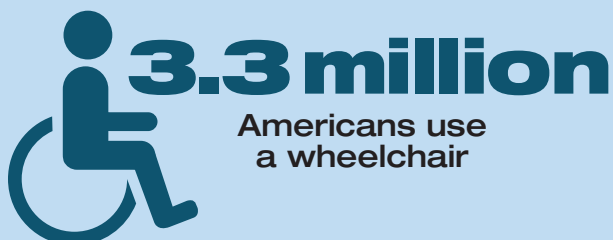
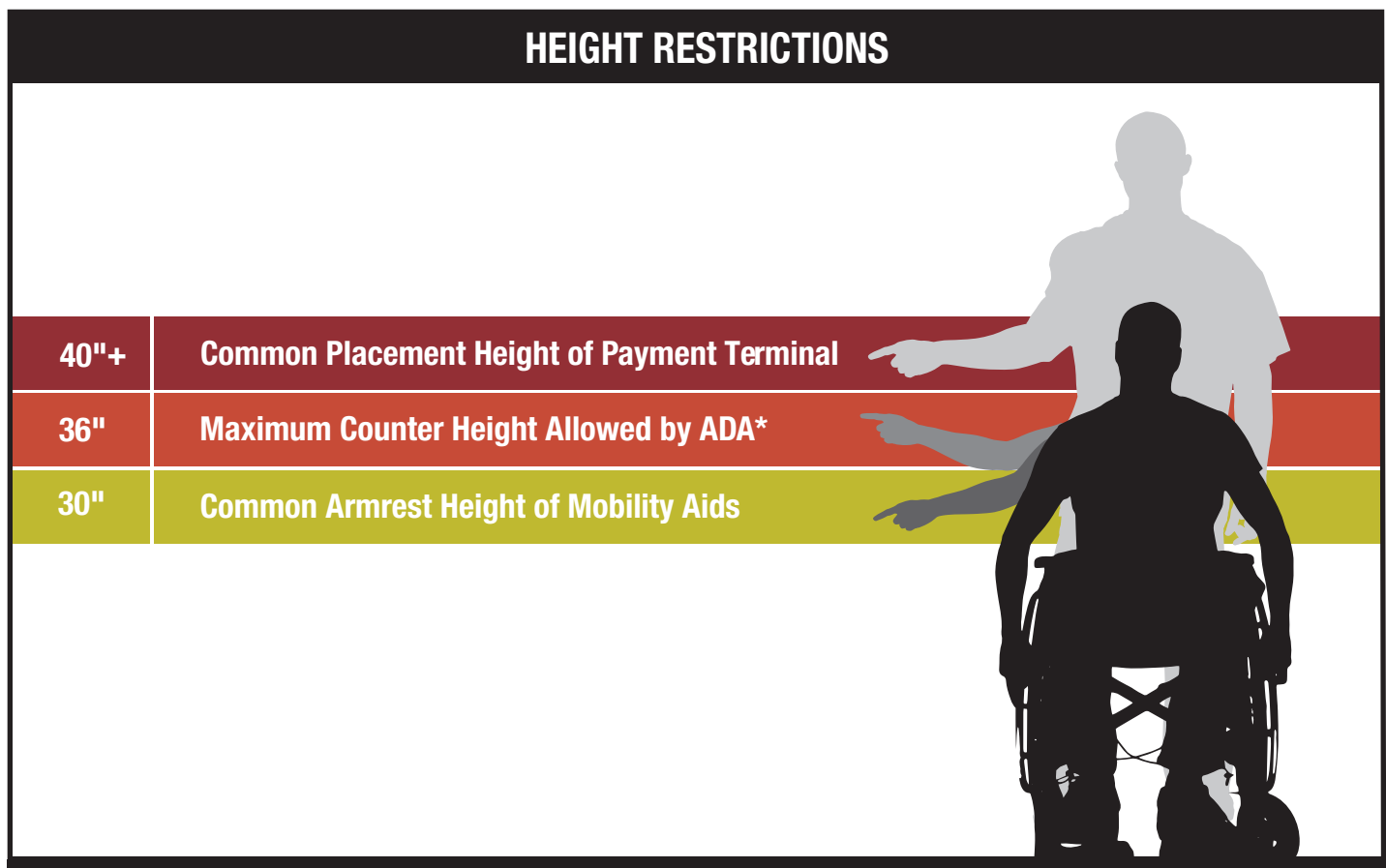
**NEW**



Adaptable and secure arm extends from a stationary position to a height within ADA\* guidelines

# Why Improve Wheelchair Accessibility to Payment Terminals?

- Lack of accessibility within checkouts is the #3 highest ADA\* lawsuit trigger.<sup>1</sup>
- 63% surge in ADA\* Title III Lawsuits filed in 2014 against public accommodations. These include federal class actions alleging that some retailers' POS devices are not accessible to people with disabilities.<sup>2</sup>
- Security concerns when customers relinquish control and security of credit cards because they can not reach the payment terminals.

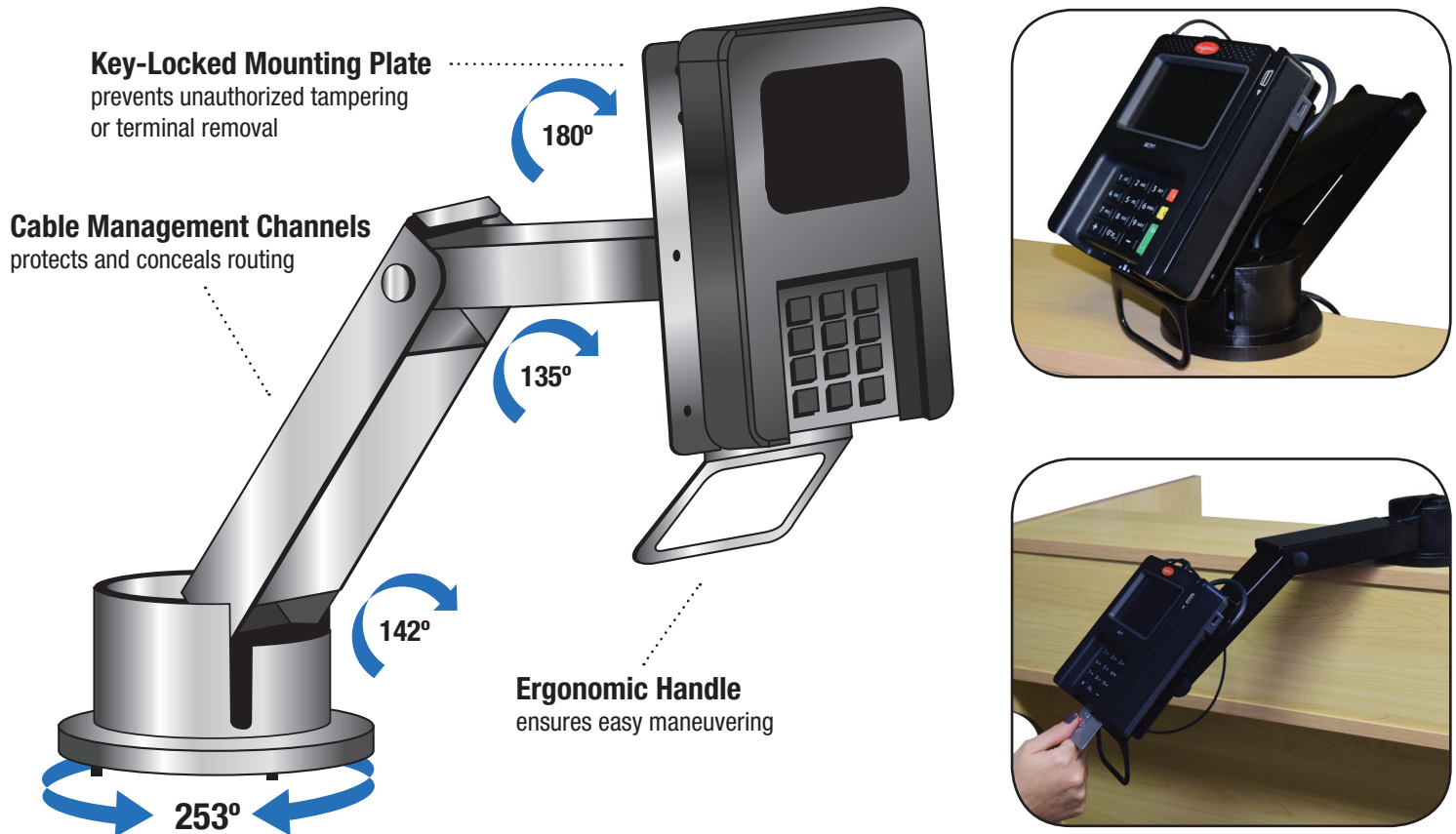


*“An accessible retail establishment brings in new customers and keeps them coming back again and again.”*

- National Disability Association -

# Features

The MMF POS **Wheelchair Accessible Mount** for payment terminals is a unique, patent pending, adaptable arm that extends from a stationary position above a standard checkout counter height to a height below the counter to within ADA\* guidelines, closer to the wheelchair armrests for easier payment verification, signing approval, and/or pin entering on the terminal screen.



- Multiple positioning angles ensure terminal display is within sight of people of different heights or those using a wheelchair
- Arm lowers a maximum of 10 inches below counter height
- Smooth tilt and rotation at multiple joints allow for continuous positioning adjustments from customer to cashier's view point
- Maximized physical protection of EMV-Ready terminals support compliance of PCI DSS v3.0-Requirement 9.9
- Essential security features provided by the terminal mounting plate include anti-skimming and port blocker solutions
- Effortless installation onto flat counter surfaces for left or right checkout lane integration

## Wheelchair Accessible Mounts

PART NUMBER	EMV-Ready payment terminal models supported
MMF-PSL80W-04	Equinox® L4100/L4150/L4200/L5300, Verifone® MX800 Family (MX830, MX850, MX860, MX870, MX880), Omni®, and Everest® Series
MMF-PSL95W-04	Verifone® / Moneris® MX915
MMF-PSL96W-04	Ingenico® iSC250
MMF-PSL98W-04	Verifone® / Moneris® MX925
SPECIFICATIONS	
Base Diameter	5 inches
Max. Outward Extension	(+/-) 10 inches
Max. Depth Extension	(+/-) 10 inches
Height ( at home position)	8 inches (with terminal)
Length of Arms	9 inches / 7.5 inches
Tilt Forward Motion (at base)	(+/-) 142°
Tilt Extension (at elbow)	(+/-) 135°
Tilt ( at Mounting Plate)	(+/-) 180°
Horizontal Rotation ( at base)	(+/-) 253°
Color	Black (custom colors available upon request)

**NOTE:** Measurements are based upon securing the stand 2 inches away from edge of the counter

### Disclosures:

\* ADA refers to the Americans with Disabilities Act. Although this product helps support compliance with ADA height performance guidelines, it does not by itself ensure ADA compliance.

Ingenico®, Equinox®, Everest®, Moneris®, Omni® and Verifone® are registered trademark of their respective owners. MMF POS is not associated with any of the aforementioned third party companies. Images of terminals manufactured by Ingenico® are shown for illustration purposes only.

**Confidentiality: Product concept is patent pending.** Information contained in this material is confidential and proprietary to Block and Company and may not be modified, copied, published, disclosed, distributed, displayed or exhibited, in any way.

### Sources:

1. [http://adahelper.com/wp-content/uploads/2015/07/Top\\_10\\_ADA\\_Lawsuit\\_Triggers.pdf](http://adahelper.com/wp-content/uploads/2015/07/Top_10_ADA_Lawsuit_Triggers.pdf)
2. <http://www.adatitleiii.com/2015/04/ada-title-iii-lawsuits-surge-by-more-than-63-to-over-4400-in-2014/>
3. <http://www.disabled-world.com/img/disability-america-infographic.png>
4. [http://www.ada.gov/business/retail\\_access.htm](http://www.ada.gov/business/retail_access.htm)



**Enclose • Protect • Secure**

www.mmfpos.com  
800.769.1954

Wheelchair Accessible Mount Sell Sheet  
1/11/16 1512693